



Version 1



Version 2



Version 3



**BERNAT® BABY COORDINATES
PUZZLE BLOCKS BABY BLANKET
(TO CROCHET)**

MEASUREMENT

Approx 36 ins [91.5 cm] square.

MATERIALS

Bernat® Baby Coordinates
(160 g/5.6 oz; 394 m/431 yds)

Contrast A

(09412 Sweet Pink) **2 balls**

Contrast B

(09402 Pinky Pink) **1 ball**

Contrast C

(01000 White) **1 ball**

Size 4 mm (U.S. G or 6) crochet hook **or
size needed to obtain gauge.**

GAUGE

One Motif = 5¾ ins [14.5 cm] square.

ABBREVIATIONS

www.bernat.com/abbreviations

INSTRUCTIONS

ALL VERSIONS

MOTIF (make 36).

Note: Ch 3 at beg of row counts as dc throughout.

With B, ch 6.

1st row: 1 dc in 4th ch from hook. 1 dc in each of next 2 ch. Turn.

2nd row: Ch 3. 1 dc in each of next 2 dc. 4 dc in loop made by turning ch of previous row. Turn. 7 dc.

3rd row: Ch 3. 1 dc in each of next 2 dc. (2 dc. Ch 2. 2 dc) in next dc. 1 dc in each of last 3 dc. Join A. Turn.

4th row: With A, ch 4 (counts as dc and ch 1). Miss next dc. 3 dc in next dc. Ch 1. (3 dc. Ch 2. 3 dc) in corner ch-2 sp. Ch 1. Miss next 2 dc. 3 dc in next dc. Ch 1. Miss next dc. 1 dc in last dc. Turn.

5th row: Ch 3. 1 dc in first ch-1 sp. Ch 1. 3 dc in next ch-1 sp. Ch 1. (3 dc. Ch 2. 3 dc) in corner ch-2 sp. Ch 1. 3 dc in next ch-1 sp. Ch 1. 1 dc in 4th ch of turning ch. 1 dc in 3rd ch of turning ch. Turn.

6th row: Ch 4 (counts as dc and ch 1). (3 dc in next ch-1 sp. Ch 1) twice. (3 dc. Ch 2. 3 dc) in corner ch-2 sp. (Ch 1. 3 dc in next ch-1 sp) twice. Ch 1. Miss next dc. 1 dc in last dc. Join C. Turn.

7th row: With C, ch 3. 1 dc in first ch-1 sp. (Ch 1. 3 dc in next ch-1 sp) twice. Ch 1. (3 dc. Ch 2. 3 dc) in corner ch-2 sp. (Ch 1. 3 dc in next ch-1 sp) twice. Ch 1. 1 dc in 4th ch of turning ch. 1 dc in 3rd ch of turning ch. Join B. Turn.

8th row: With B, ch 4 (counts as dc and ch 1). (3 dc in next ch-1 sp. Ch 1) 3 times. (3 dc. Ch 2. 3 dc) in corner ch-2 sp. (Ch 1. 3 dc in next ch-1 sp) 3 times. Ch 1. Miss next dc. 1 dc in last dc. Join C. Turn.

9th row: With C, ch 3. 1 dc in first ch-1 sp. (Ch 1. 3 dc in next ch-1 sp) 3 times. Ch 1. (3 dc. Ch 2. 3 dc) in corner ch-2 sp. (Ch 1. 3 dc in next ch-1 sp) 3 times. Ch 1. 1 dc in 4th ch of turning ch. 1 dc in 3rd ch of turning ch. Join A. Turn.

10th row: With A, ch 4 (counts as dc and ch 1). (3 dc in next ch-1 sp. Ch 1) 4 times. (3 dc. Ch 2. 3 dc) in corner ch-2 sp. (Ch 1. 3 dc in next ch-1 sp) 4 times. Ch 1. Miss next dc. 1 dc in last dc. Turn.

11th row: Ch 3. 1 dc in first ch-1 sp. (Ch 1. 3 dc in next ch-1 sp) 4 times. Ch 1. (3 dc. Ch 2. 3 dc) in corner ch-2 sp. (Ch 1. 3 dc in next ch-1 sp) 4 times. Ch 1. 1 dc in 4th ch of turning ch. 1 dc in 3rd ch of turning ch. Fasten off.

FINISHING

Following diagram for Version I, II or III, assemble Motifs as desired.

Edging: 1st rnd: (RS). Join C with sl st in any corner ch-2 sp of Blanket. Ch 1. 3 sc in same sp. (Work 22 sc across side of next 6 Motifs. 3 sc in next corner) 3 times. Work 22 sc across side of next 6 Motifs. Join with sl st to first sc. 540 sc.

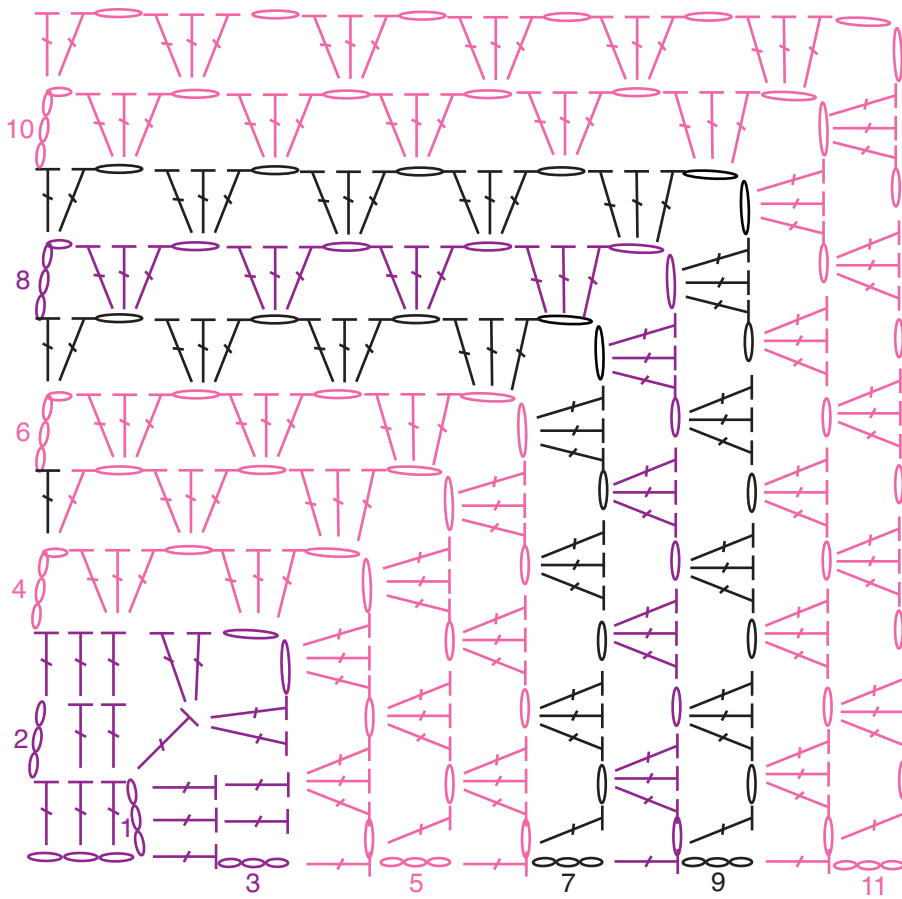
2nd rnd: Ch 3. 1 dc in same sc as last sl st. *Miss next 2 sc. (1 sc. Ch 3. 1 dc) in next sc. Rep from * around, ending with miss last 2 sc. Join with sl st to first sc. Fasten off.



P.O. Box 40, Listowel ON N4W 3H3
"home style... life style... your style."

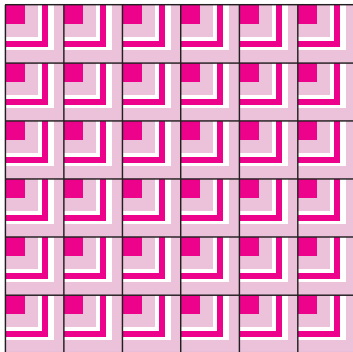


Chart

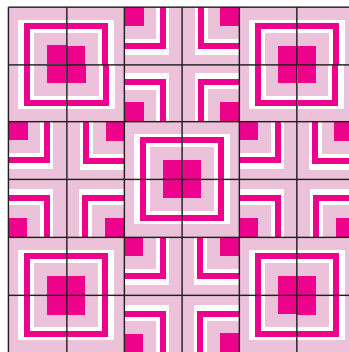


Key

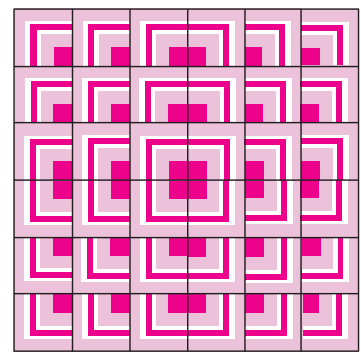
- = chain (ch)
- ┆ = double crochet (dc)



Version 1



Version 2



Version 3